

S H I P N E T

# Shipnet Procurement

Procurement Management  
Solution - Supply Chain

Fact Sheet





## Shipnet Procurement Management Solution

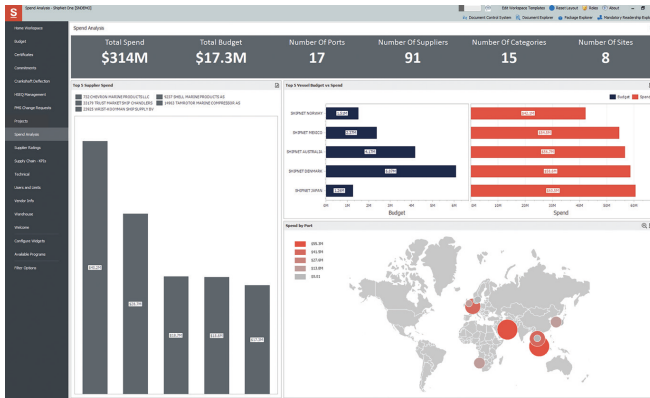
Supply chain process - from items being ordered to receipt and invoicing.

Shipnet's Procurement Management Solution allows you to make informed decisions to optimize your spending. The solution provides a complete Ship-to-Shore procurement tool including defined workflows, budget validation, price comparison, and on-board shopping utility - as well as Logistics and Warehouse management. Data and information from Procurement is shared in other Shipnet ONE solutions.

## End-to-end transparency

**Procurement allows full logistic control to effortlessly sync with ledgers, budgets, and finance departments.**

Whether goods are going from suppliers to vessels, or consolidated shipments from the warehouse, you have full control. Unlike other standalone solutions, Procurement touches nearly every department, including CPOs, Technical Managers, Purchasers, Warehouse Managers, Technical Superintendent and seafarers - providing full transparency at every stage of the ordering process.



## Why Shipnet Procurement?

- User defined workflows that enables correct process on ship as well as shore
- Tasks are pushed to the users through alerts and task manager
- Common user interface and database on ship and shore
- Enhanced security through role-based user management
- Integrated with the Shipnet ONE Planned Maintenance System
- Supplier pricelist lookup functionality within Shipnet ONE
- Make informed decisions with smart price evaluation process
- Enhanced supplier evaluation
- Deep integration to ShipServ
- Multi-tab desktop layout enables several concurrent tasks
- Optimise resource utilisation with Mobile PO approval
- Dynamic budget validation both on ship and shore
- Integrated Logistics and Warehouse modules on Windows and Web platforms

## Some of the benefits

### 1. Efficient integration

Perfect alignment between Technical and Financial for improved integration at every touch point.

### 2. Compliance built in

Efficient approval hierarchies and four-eye approvals with complete auditability, designed for streamlined compliance.

### 3. SNAPS Web

Simple web forms can be accessed via the portal, for better communication and electronic quotations with suppliers.

### 4. Inter-departmental workflows

Configurable to match your business workflows, to make sure individual tasks can be tracked from A – B.

## Centralised data

All vital data, from maintenance-related consumption to warehouse packages, is held centrally, simplifying meaningful decisions.

## All-in-one solution

Our end-to-end cycle brings every stage of procurement together – from sourcing, to logistics, to invoicing.

**Request a demo today for a personalized walkthrough of the solution**

## More about ShipnetONE - the home of all the Shipnet solutions

Shipnet has almost 30 years' experience developing and delivering software solutions for the Global Shipping Industry. Shipnet solutions currently enable more than 230 Shipping Customers of all sizes and trades to effectively manage their business.

ShipnetONE is a fully integrated Maritime ERP solution, which encompasses all aspects of Maritime Business Transactions, including Commercial Vessel Operations, Financial Accounting and Vessel Technical, Safety and Crew Management. It shares data across all departments to provide the world's leading Ship Owners and Operators with total business overview, allowing informed strategic business decisions to be made based on real time data.

### All the biggest maritime operation apps under one roof

Manage commercial ops and see to the fleet's technical needs, safety, logistics, and finances, all in one place. It's a complete integrated support and business solution, with you for the whole voyage.

#### Unique to market

The only modern solution that includes commercial, technical, safety and financial management, all in one place.

#### Enjoy a better view

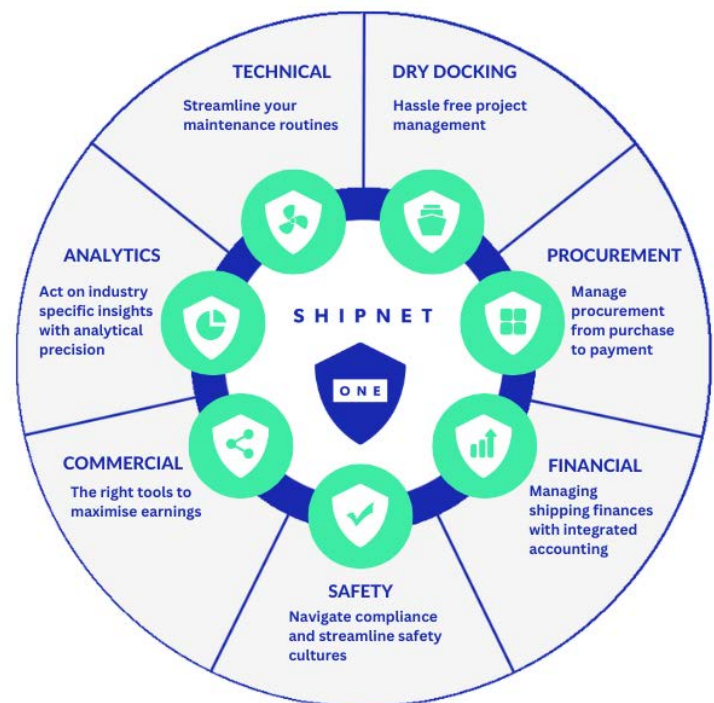
Built in visual reporting makes small work of gathering your analytics and compiling real-time data, for a broader view of operations.

#### Do-it-yourself ERP

Stay on top of day-to-day tasks by creating your own enterprise resource plan, adapting alongside your business and responsibilities.

#### All your apps in one place

With Shipnet ONE, all your products, tools and apps are in the same place, for holistic management and improved productivity.





# Take your business to the **next level.**

## Shipnet

Brilliant Group AS  
Setersoevegen 2c  
Postbox  
912151  
Aarnes  
Norway

P: +47 21 01 92 00

E: [sales@shipnet.no](mailto:sales@shipnet.no)

W: [www.shipnet.no](http://www.shipnet.no)